

## Boundary Review Banbury Heights School & Branlyn Community School

February 10, 2022



# Grand Erie District School Board



## Agenda

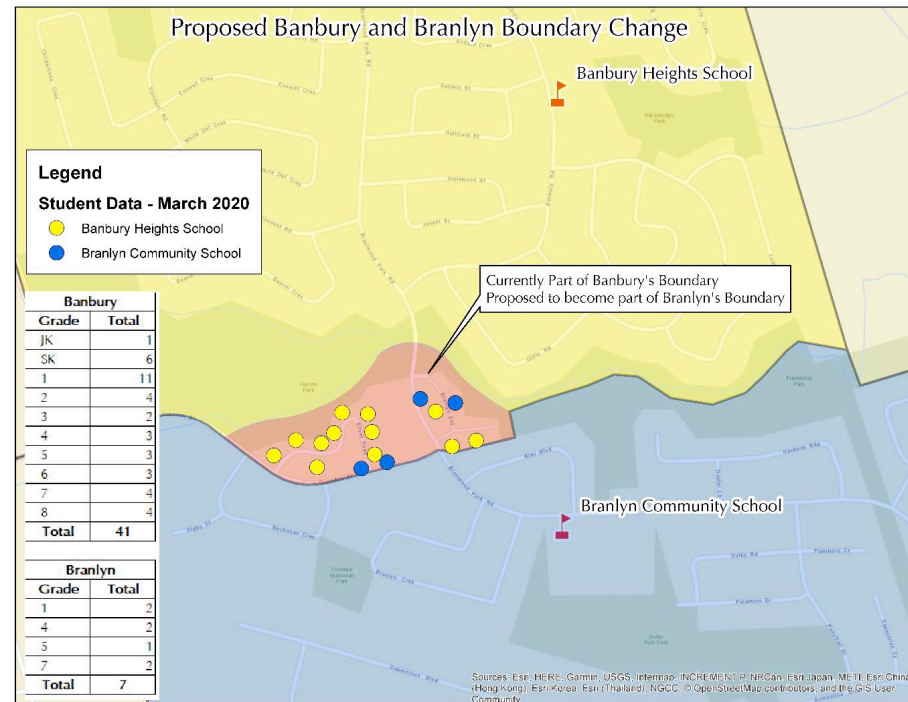
- Welcome, Introductions and Land Acknowledgment Statement
- Boundary Review Process
- Purpose of the Boundary Review
- Number of Students within the Amended Catchment Area
- Distance to Schools
- General Information About the Schools
- Next Steps
- Questions/Discussion

## Boundary Review Policy FT8

- Review of school catchment areas for Banbury Heights School & Branlyn Community School were initiated by the Board of Trustees after consideration of long-term accommodation forecasts and recommendations from the Board's Quality Accommodations Committee.
- A working group was established, containing parent representatives, school Principals and Senior Administration. The working group will review information about the proposed boundary change and receive feedback from the school community.
- This public meeting is being held to share the proposed school boundary change and receive community feedback.
- Upon having received community feedback, the working group will make a recommendation to the Board for boundary considerations.

## Purpose of the Boundary Review

- To redirect students at the southern edge of the catchment area of Banbury to Branlyn. The boundary adjustment would use the creek through Jaycee Park as the divide. This would balance the student enrolment and utilization between these two schools and potential remove the need for the six-room Relocatable Classroom Module from Banbury Heights.



## Number of Students Within the Amended Catchment Area

- Based on the March 2020 numbers (pre-Covid), 41 students.

Current				
Grades	All Banbury	Banbury Affected	All Branlyn	Branlyn Out of Area
JK	40	1	26	
SK	47	6	28	
1	41	11	25	2
2	41	4	33	
3	40	2	32	
4	30	3	29	2
5	35	3	39	1
6	24	3	24	
7	42	4	30	2
8	37	4	39	
<b>TOTAL</b>	<b>377</b>	<b>41</b>	<b>305</b>	<b>7</b>
Ministry OTG	469		426	
Utilization	80%		72%	
Non-Permanent OTG	138			
Total GEDSB OTG	62%			

Proposed		
Grades	Banbury	Branlyn
JK	39	27
SK	41	34
1	30	36
2	37	37
3	38	34
4	27	32
5	32	42
6	21	27
7	38	34
8	33	43
<b>TOTAL</b>	<b>336</b>	<b>346</b>
OTG	469	426
Utilization	72%	81%

\* Removal of 6 Pack RCM from Banbury

# Grand Erie District School Board



## Number of Students Within the Amended Catchment Area

- Based on the February 2022 numbers, approximately 31 students.
  - 6 Virtual Learning Students

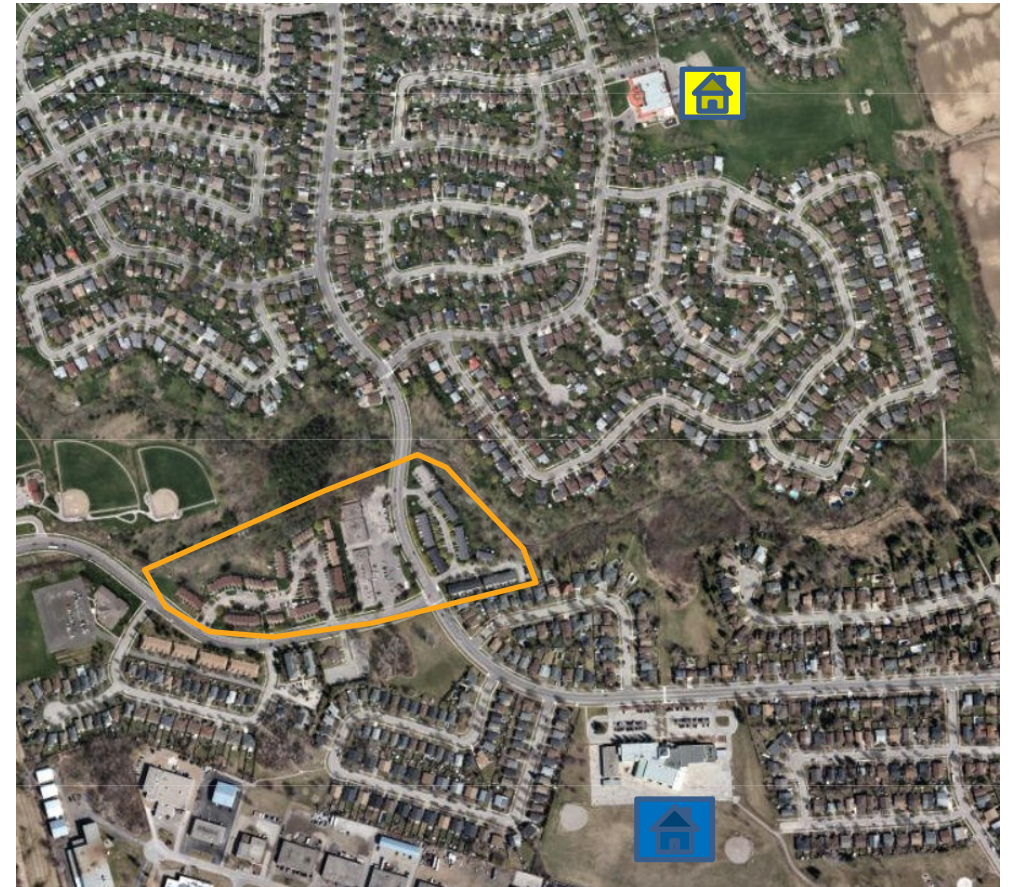
Current					
Grades	All Banbury	Banbury Affected	All Branlyn	Branlyn Out of Area	Virtual Learning
JK	31	3	15	1	
SK	30	4	26	1	
1	49	1	25		
2	43	6	24	1	
3	37	5	28		3
4	38	3	29	1	
5	44	3	34		
6	32	2	30		1
7	39	2	34	1	2
8	25	2	24	1	
<b>Total</b>	<b>368</b>	<b>31</b>	<b>269</b>	<b>6</b>	<b>6</b>
Ministry OTG	469		426		
Utilization	78%		63%		
Non-Permanent OTG	138				
Total GEDSB OTG	61%				

Proposed		
Grade	Banbury	Branlyn
JK	28	18
SK	26	30
1	48	26
2	37	30
3	32	33
4	35	32
5	41	37
6	30	32
7	37	36
8	23	26
<b>Total</b>	<b>337</b>	<b>300</b>
OTG	469	426
Utilization	72%	70%



## Distance to Schools

- Walking distance from amended catchment area to Banbury is approximately 1 km.
- Walking distance for those students to Branlyn is approximately 500 m.





# Grand Erie District School Board



## General Information

- Bell Time
  - Banbury 8:45 AM – 3:05 PM
  - Branlyn 9 AM – 3:20 PM
- Before and After Care
  - Both schools have before and after school care programs
    - Banbury – Boys and Girls Club of Brantford
    - Branlyn – YMCA





# Grand Erie District School Board



## Next Steps

- The working group will have a follow up meeting to discuss the information and comments provided at this meeting. A subsequent recommendation regarding the Boundary Adjustment will be made to the Board.
- Feedback is welcome by February 17<sup>th</sup>, 2022:
  - By email to [planning@granderie.ca](mailto:planning@granderie.ca);
  - Through your school council representative;
  - By contacting your school Principal:
    - Mr. Peter Ashe – Banbury Heights [peter.ashe@granderie.ca](mailto:peter.ashe@granderie.ca)
    - Mr. Joseph Atanas – Branlyn Community [joseph.atanas@granderie.ca](mailto:joseph.atanas@granderie.ca)

# Grand Erie District School Board



**Questions?**