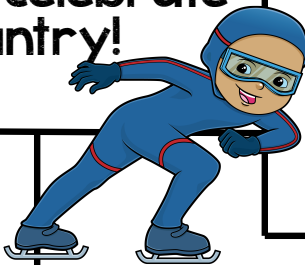


**Welcome February!**  
**This is a very busy month! We have a lot of special days - Groundhog Day, 100<sup>th</sup> Day of School, Valentines Day, Family Day, Chinese New Year AND... it is the OLYMPICS. I LOVE the Olympics and have developed a special unit for the children to use as we watch and celebrate the athletes in our country!**



## **Important Dates**

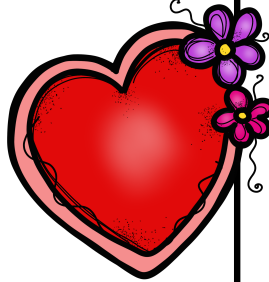
- 2 Groundhog Day
- 9 Olympics begin
- 12 Assembly
- 12 100<sup>th</sup> Day of School
- 13 Pancake Day (Shrove Tuesday)
- 14 Valentines & red, pink and white day
- 15 Reports Home
- 16 Chinese New Year
- 19 Family Day  
**NO SCHOOL**
- 23 Pajama Day



### Valentines Day:

Please send in an EMPTY cracker box by February 9<sup>th</sup> for your child to decorate at school as a Valentine holder. Thank you. Here is a list of students for Valentine's cards:

Jack	Brett
Skyler	Gage
Elizabeth	Harold
Matthew	Jayden
Dom	Sienna
Chanel	Jennah
Charlette	Alexis
Arianna	Meagan
Drayden	Gracie
Peyton	Nevaeh
	Korwyn



### Language

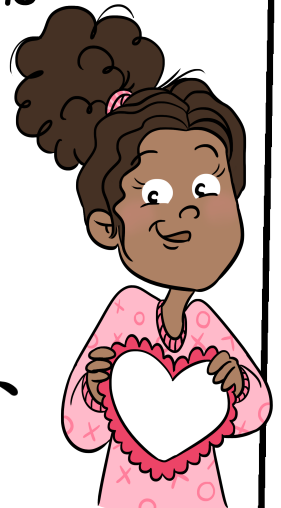
We are focusing on WRITING skills this month. Parents, please take some time each night to write with your child. We are really trying our best to remember how to form letters properly, how to print neatly and capitalize where necessary. Our focus moving forward is on proper sentence structure and expanding our sentences to contain adverbs and adjectives. We are trying to write more descriptive sentences.

### Science

**Structures and Mechanisms**

**Gr. 2: Movement**

**Gr. 3: Strong and Stable Structures**



# February

### Math

**Multiplication, Money & Measurement**

